

A modern, multi-story building with a white facade and large glass windows. A prominent orange diagonal stripe runs from the bottom left towards the top right, passing behind the building. The building is situated on a grassy hillside with some trees and bushes in the foreground. The sky is blue with a few clouds.

MODULAR AND FLEXIBLE KVM SOLUTIONS

ihse.

GREEN KVM

OUR CONTRIBUTION
TO CONSERVING
GLOBAL RESOURCES

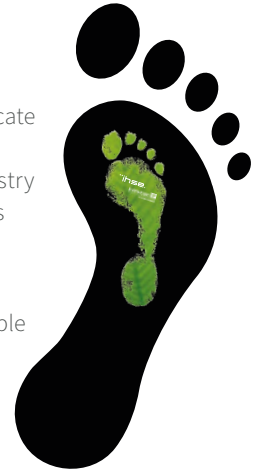
SUSTAINABLE KVM SOLUTIONS ■ SAVING ENERGY AND COSTS

LOWER ELECTRICITY COSTS, LOWER CO₂ EMISSIONS

RECONCILING SUSTAINABILITY AND EFFICIENCY

IHSE has pursued a sustainable strategy for many years, resulting in the award of an environmental certificate by TÜV SÜD in 2020. IHSE's KVM technology maximizes the operational lifespan of devices and reduces electronic waste. IHSE devices have particularly low power consumption compared to the rest of the industry – an enormous advantage, in times of high energy prices and global efforts to keep energy consumption as low as possible.

IHSE's Green KVM measures and energy-saving operations prove the viability of combining environmental protection with high economic efficiency. Users benefit from lower energy cost as well as a more sustainable and greener environment. IHSE is continuously working on further ways to increase efficiency, lower costs and reduce its ecological footprint.



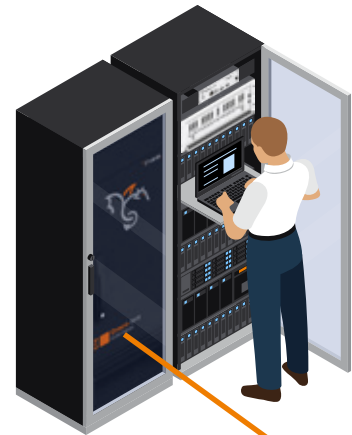
WHY IS KVM A SUSTAINABLE TECHNOLOGY?

Increased equipment life

Housing computers in environmentally-controlled server rooms, protected from heat, dust, dirt and moisture increases their lives and reduces electronic waste.

Sharing of equipment

Computers and other source devices can be shared. This reduces the need to duplicate devices, resulting in lower costs and electronic waste.

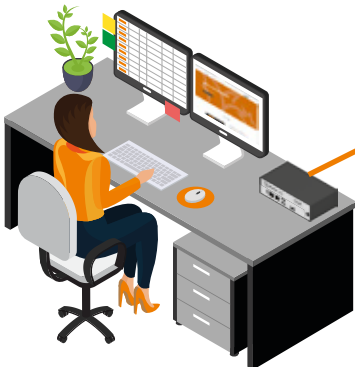


Reduction in air conditioning

Relocating computers outside the office environment reduces the local air conditioning overhead and its power consumption.

Workstation efficiency

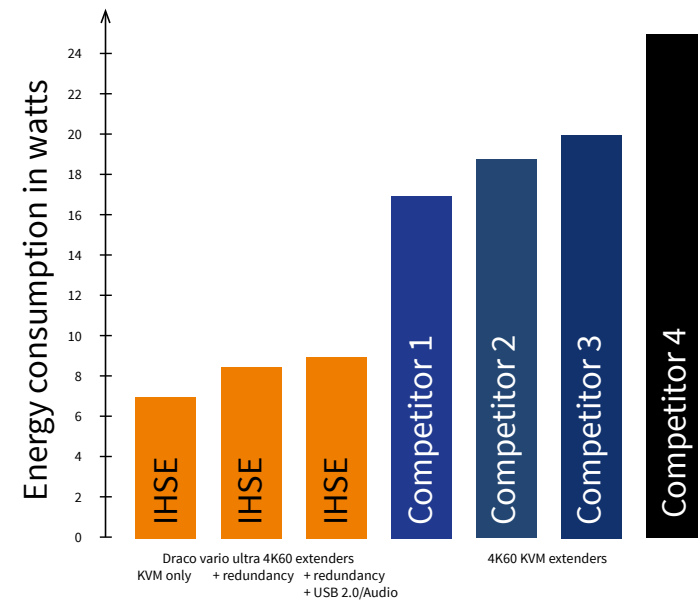
KVM helps reduce the number of input and display devices at multi-source and multi-role workstations, preventing desktop clutter and waste.



STEPS TO SUSTAINABILITY

I. LOW ENERGY CONSUMPTION

The energy-efficient design of IHSE extenders reduces power consumption and associated heat generation as far as possible.



V. SMART USE OF RESOURCES

Our devices are designed for longevity and 24/7 operation. They support load reduction allowing power supplies to last longer. The life span of our devices is exceptionally long; defects are repaired in our workshop instead of replacing the devices completely.

By consistently avoiding harmful substances and chemicals, IHSE devices exceed the legal ROHS and REACH regulations.

II. REDUCED SYSTEM INFRASTRUCTURE

Lower heat generation reduces the need for air conditioning in workspaces and equipment rooms, providing a significant saving in running cost.

Smaller, cooler-running devices can be packed more closely in equipment racks. Resulting in fewer cabinets, cabling and required space.

III. MODULARITY

KVM devices and systems can be configured to match user requirements, with no unnecessary functionality or interfaces. This reduces the consumption of hardware resources, mounting space and energy usage.

Future expansion of installed systems is possible through the addition of individual modules – without the requirement to replace the whole system.

IV. REDUCED CO₂-EMISSIONS

The low energy consumption of KVM devices combined with reduced air conditioning levels in workstation and server rooms results in a significant reduction in the release of climate-damaging carbon dioxide associated with power generation.



SUSTAINABLE PRODUCTION AT THE COMPANY SITE

OUR HQ CONTRIBUTION TO THE ENVIRONMENT

Throughout our operational activities we are working hard toward climate neutrality. All processes are challenged to operate as environmentally friendly and sustainably as possible in accordance with ESG criteria and the UN Sustainability Goals.

Conserving resources

- A mainly paperless office and digital communication process with customers and suppliers reduces resource consumption. If printed texts are absolutely necessary recycled paper is used.
- We employ an ecological packaging concept based on recycled materials. We cooperate with suppliers through the reuse of packaging.
- Return and recycling of unwanted equipment through environmentally friendly disposal (WEEE registered). Safe chemicals are used in all areas.



Energy management

- A large photovoltaic system on the roof supplies most of the company's electricity requirements.
- All company cars are being converted to electric and hybrid drives and charged with self-generated solar energy. We provide motivation to employees to switch to e-bikes through special leasing offers.
- Our HQ is equipped with energy-saving heating and air conditioning technology with heat exchangers and active control. Automated shading and energy efficient, LED lighting are used throughout the company headquarters.



Space for nature

- Our headquarters office is an oasis for people and nature: a unique biotope with two natural ponds fed by rainwater and condensation. The surrounding flora consists of native plants. Various species of dragonflies, frogs, newts and stoats have settled here.
- An insect hotel for endangered wild bees and five honeybee hives further contribute to ecological balance.
- IHSE has received an award for successful quality and environmental management from TÜV SÜD.



Headquarters

IHSE GmbH
Benzstr. 1
88094 Oberteuringen
Germany

Tel: +49 (7546) 9248-0
info@ihse.de
www.ihse.com

IHSE USA LLC
1 Corporate Drive
Cranbury, NJ 08512
USA

Tel: +1 (732) 738 878 0
info@ihseusa.com

IHSE GmbH Asia Pacific Pte Ltd
158 Kallang Way, #07-13A
Singapur 349245

Tel: +65 (6841) 470 7
info-apac@ihse.com

IHSE China Co., Ltd.
401-9, Qixi Building, No. 286
Science Avenue, Huangpu District,
Guangzhou, PRC

Tel: +86 (189) 888 381 11
info@ihse.com.cn

kvm-tec electronic GmbH
Gewerbepark Mitterfeld 1A
2523 Tattendorf
Österreich

Tel.: +43 (2253) 81 912
sales@kvm-tec.com
www.kvm-tec.com

Regional offices

The Lab Paris, France
Tel: +33 (678) 478 822
info@ihse.com

Shoham, Israel
Tel: +972 (544) 320 768
info@ihse.com

Zwettl, Austria
Tel: +49 (173) 590 711 9
info@ihse.com

Seoul, South Korea
Tel: +82 (103) 752 401 3
info@ihse.com

South Asia & Middle East
Tel: +91 (982) 113 918 6
info@ihse.com

